

LEARN A LANGUAGE IN

'Gran Canaria'



LEARN A LANGUAGE IN PARADISE

¡HOLA!

Welcome to Language Campus in Gran Canaria!

When thinking about learning a new language or exploring a new culture, many different options may come to mind. By opting for a language course at our school in **Las Palmas**, you are guaranteed an exciting experience in a bustling city overflowing with cosmopolitan ambience, history, culture and warm temperatures all year round.

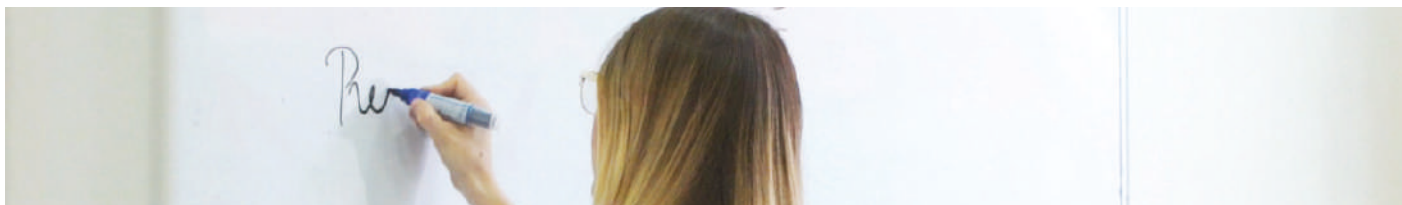
Las Palmas is the capital of Gran Canaria and the most populated city in the Canaries. It is one of the main attractions in Europe thanks to its delicious local gastronomy, the kindness of its people, its golden beaches and its neverending sunshine.



CANARY ISLANDS



GRAN CANARIA



ABOUT LANGUAGE CAMPUS



Founded in 2008, Language Campus is the leading language company in the Canary Islands. We take pride in being a rapidly growing, young company made of a team with committed professionals.


Our way of teaching has been designed to help our students in a flexible and personalised manner that can be adapted to their needs and availability, in order to achieve rapid and strong progress in their study of languages. Further to this, our mission is to guarantee the provision of high-quality educational services, in a friendly environment, through the use of the latest educational technology, in comfortable and modern facilities.

Our language programmes will give you the opportunity to study in a privileged location in the city centre and only a stone's throw from the famous beach of Las Canteras.


Let us guide you through our different course offers and help you start a high-quality learning experience in one of the jewels of Spain!

 **3** schools in Gran Canaria

 **+15** years of experience

 **+40** qualified teachers

 **97%** satisfaction rate

 **+21.000** students

 **+1.000.000** hours in training activities

At Language Campus our methodology is adjusted to the principles promoted by the Common European Framework of Reference for Languages (CEFR) as well as consistent assessment methods. We adapt to your needs and availability so that you can achieve rapid and strong progress, with the latest educational technology in modern and comfortable facilities. We base our teaching upon an active participation of all students and we record your progress by continuously assessing your language skills.

Languages taught. Spanish, English, Portuguese, French, Italian, German, Arabic and Chinese.

Teachers qualifications. All our teachers are highly qualified: degree + CELTA or equivalent. Some also hold the higher level DELTA, PGCE or MA in applied linguistics or MFL. For Spanish teaching: BA in Hispanic Philology, MA in Spanish Teaching as a Foreign Language (ELE) or Certificate in Spanish Teaching as a Foreign Language (ELE).

Schools facilities. Air conditioning, WiFi, computer & screen in every classroom and library.





LOCATIONS

We have **3 schools** located in the heart of the most populated city of the Canary Islands.



Academic programmes

No matter what your goal is, we'll make it happen

GENERAL

COURSES

Our general courses are given in groups of up to 15 people with the objective of providing our students with personalised attention. We base our teaching upon the active participation of all students and we record their progress by continuously assessing the linguistic skills they have developed throughout the process. We also offer courses depending on students demands and needs such as individual courses, mini groups, special interest, conversational and exam preparation courses.



Duration

1-52 weeks



Start dates

Any Monday all year round



Language levels

All



Students per group

Máx. 15



Classes

20 core lessons per week



General

20 lessons per week

Designed for students who want to **progressively master** all aspects of the language in a practical and communicative manner.



General Plus

25 lessons per week
(General course + 5 one to one additional lessons)

This course provides students with the flexibility to adjust their learning process to their needs **adding additional classes** to their core general course.



Intensive

30 lessons per week
(General course + 10 one to one additional lessons)

Our intensive programme is designed for students who want an **accelerated learning programme** to reach a specific goal while studying with us.



PERSONALISED

COURSES



Duration

1-52
weeks



Start dates

Any Monday
all year round



Language levels

All



Students per group

1-3



Classes

5, 10 or 20
core lessons
per week



Mini groups

Our mini-group course is ideal for **reduced groups** with **similar educational needs** and language levels.

You may attend classes with friends or relatives and have the chance to personalise your learning experience and learn at your own pace.



Individual classes

An ideal course for students with **specific language needs**.

Our private One-to-One classes are fully personalised and give you the opportunity to establish your own schedule and learning pace.



PROFESSIONAL

FOCUS

A course intended to help you acquire the language skills necessary to communicate in specific professional fields. Advance in your career and make the most out of your stay with us.



Duration

1-4
weeks



Start dates

Any Monday
all year round



Language levels

B1-C2



Students per group

Máx. 15



Classes

20 core lessons
+ 10 specific
classes per
week



Languages for business

This course combines improving your general ability with taking **focused lessons on business skills**.

Practice workplace communication techniques and specific commercial vocabulary.



Languages for hospitality & tourism

This course is ideal for those who want to learn specific vocabulary and expressions used in the **travel, tourism, and hospitality sectors**.



SPANISH

EXAM PREPARATION



Duration

1-8 weeks



Start dates

Any Monday
all year round



Language levels

All



Students per group

Máx. 15



Classes

20 core lessons
+ 10 individual classes



DELE exam preparation

The **DELE** (Diploma of Spanish as a Foreign Language) is the only Spanish certificate for non-Spanish speakers officially recognised by the Spanish Ministry of Education.

You can either prepare for the official DELE Exam with our Intensive programme where you will receive **10 individual classes per week** or by taking a **personalised course**.



DELE 20 exam preparation

The **DELE** (Diploma of Spanish as a Foreign Language) is the only Spanish certificate for non-Spanish speakers officially recognised by the Spanish Ministry of Education.

20 group lessons + 10 individual lessons focused on exam preparation



SIELE exam preparation




SIELE stands for *Servicio Internacional de Evaluación de la Lengua Española* – International Assessment Service for the Spanish Language.

You can either prepare for the official SIELE Exam with our Intensive program where you will receive **10 individual classes per week** or by taking a **personalised course**.



ENGLISH

EXAM PREPARATION

 Duration 1-8 weeks	 Start dates Any Monday all year round	 Language levels All	 Students per group Máx. 15	 Classes 20 core lessons + 10 individual classes
---	--	---	---	--



OXFORD exam preparation

The **Oxford Test of English** is a multilevel, general English proficiency test which assesses the ability to understand and communicate effectively in English, reporting at four CEFR levels: C1, B2, B1, and A2. The test covers all four skills: Speaking, Listening, Reading, and Writing.

Language Campus is an approved test centre for the Oxford Test of English.



CAMBRIDGE exam preparation

The Cambridge English exams Proficiency (CPE), Advanced (CAE), First (FCE), Preliminary (PET) and Key (KET) are recognised around the world by thousands of employers, universities and government ministries as proof of ability to use English.

Language Campus is an approved preparation centre for the Cambridge English Qualifications.



LEISURE ENGLISH OR SPANISH

PROGRAMMES

Combine your lessons with your favourite **sports** and **activities**. Book the combination course with our **General 20, 25 or 30 group course** and add your favourite sports and leisure program.

 Duration 1-8 weeks	 Start dates Any Monday all year round	 Language levels All	 Students per group Máx. 15	 Classes 20 core lessons + leisure program
---	---	---	---	---



Surf

Enjoy a unique surf experience in one of the **best surf beaches** in Europe. Located a few steps away from the school, Las Canteras beach has the perfect weather and surf conditions all year round.



Windsurf

Combine language learning with **the excitement of windsurfing** and make the most of your stay in Gran Canaria.



Yoga

Combine your immersion with **the most relaxing yoga classes** by the beach! Acquire balance while strengthening your mind, body and immune system.



Multiadventure

Choose from **Paragliding, Paramotor, Scuba diving, Rock climbing, Skydiving, Kitesurfing, Mountain Bike and Trekking**. Your adventure on the islands starts with us.



Dance

Combine your lessons with your love of dance, be it **Flamenco, Salsa, Merengue, Bachata or Afro-Cuban**.

OTHER

COURSES



Extensive course 4

A quarterly study program structured in **50 lessons** per level, taking place **twice a week**.

Morning or **afternoon** classes

4 lessons per week



Extensive course 5

A quarterly study program structured in **50 lessons** per level, taking place **twice a week**.

Morning or **afternoon** classes

4 lessons + 1 conversation lesson per week

LONG-TERM

PROGRAMMES

Combine your language and academic studies with work experience or volunteering with one of our long term programmes. Prepare for an official exam, gain work experience or customize your gap year program depending on your field of interest.



Duration

6, 9 or 12 months



Start dates

First Monday
Sep and Jan



Language levels

All



Students per group

Máx. 15



Classes

Core lessons
per week



Why Gran Canaria?

Discover a world of possibilities on our miniature continent



24°C

75°F

AVERAGE ANNUAL TEMPERATURE

GRAN CANARIA IS

SUN

Gran Canaria, an island of contrasts with a spectacular landscapes which stands out for its wealth of natural beauty, its microclimates and its unique geographical terrain.

There are **60 kilometers** of beaches along the Atlantic Ocean, each of them with its own distinct natural features, each of them blessed with a privileged spring like climate 365 days a year.

The island is also a privileged destination for water sports: **sailing, surf, windsurf, bodyboard, diving, sports fishing...** unsurprisingly, Gran Canaria is home to some thirty World Champions and six Olympic gold medal winners.



Gran Canaria is truly a “**miniature continent**”, a unique feature of the island that has led the UNESCO to declare over 40% of its ecosystem a **World Biosphere Reserve**.





GRAN CANARIA IS CULTURE

Towns and villages with over **500 years of history** reflected in the architecture with its distinct colonial flavour, along with centuries-old traditions with their unique Atlantic identity. As a bridge between three continents, Gran Canaria was witness to one of the greatest adventures in History: the discovery of the **New World**, serving as a link between Europe, America and Africa

Gran Canaria's vast historic legacy goes way back to the first ancient island dwellers, whose archeological remains complement a **fine cultural agenda**. In the museums around Gran Canaria visitors come face to face with history, and get an insight into top universal artistic trends.



GRAN CANARIA IS **ADVENTURE**



Sports lovers have an endless choice of alternatives to combine their favourite discipline with lush countryside, and stunning coastal views. The year round climate on the island invites one and all to do a wide range of sports in natural surroundings.

Hiking, climbing, surf or cycling routes are just some of the top choices for tourists in Gran Canaria. Enjoy a variety of activities: from a camel ride to a trip in a submarine along the sea bed at Mogán; a voyage to the stunning world of exotic animals at the various zoos, or an unforgettable day on the slides of a water park! In Gran Canaria, **boredom doesn't exist.**





GRAN CANARIA IS

FUN

Las Palmas de Gran Canaria is the capital city and the heart of the island. It takes its name from the abundance of palm trees: a testament to its charming, island feel.

Las Palmas has a mainland-Spain feel spiced up with an eclectic mix of other cultures, including African, Chinese and Indian. This unique melting pot is the result of the island's geographical location between three continents. It's an intriguing place, with the golden tranquility and energy you would normally associate with the Mediterranean or North African countries. The beeping taxis, bustling shopping districts, chatty bars and thriving port all give off the energy of this city, which is **Spain's ninth-largest**.

It is located in the north-eastern part of the island, set in magnificent scenery composed of two bays and their beautiful beaches – **Playa de las Canteras** and **Playa de las Alcaravaneras**.

Founded in 1478, **Las Palmas de Gran Canaria** boasts an important historical and cultural heritage, much of which can be found in the district of **Vegueta**, the oldest quarter of the town. Just next to it lies **Triana**, a vibrant neighborhood known for its charming pedestrian streets, modernist architecture, and bustling commercial area, making it a perfect blend of history and contemporary life.



Accommodation

Just like home



SPANISH

HOST FAMILY

Staying with a local Spanish family is the best way to be immersed in the culture of the island. Be a part of the Canarian family lifestyle and start a lifelong relationship!



HOTELS

Live in one of our fully equipped hotels. We have a full variety in different locations on the island.

Hotels are the best option to live close to the beach and choose from different options according to your needs and comfort. We will be happy to assist you with the best nearby hotels.



PRIVATE

APARTMENT

Our apartments are conveniently located in the city for you to move in.



PRICE LIST

All prices are in Euros (€) and are a approximation.

FEES

◆ Fixed Fees:

Registration: 45
Course materials: 45
**Cost of material by level*
Administration fee: 300
**For Visa and long-term programmes*

◆ Other fees:

Accommodation placement: 30
Change: 50
Document courier: 70
Travel & medical insurance: 25 per week
Flight delay (see transfers section below): 30

KEY INFORMATION

- ◆ Minimum age: 16 unless stated otherwise; students under 18 are legally minors and subject to additional terms and conditions.
- ◆ Minimum stay: 1 week
- ◆ Start dates: Every Monday unless otherwise stated.
- ◆ School closing dates: National and local Bank Holidays. Please note that there are no discounts for courses taken during weeks when the school is closed.

CORE LANGUAGE COURSES

Per person per week	Short Stay		Long Stay	Course dates	Lessons per week	Min level	Max class size
	1-4 weeks	5+ weeks	12+ weeks				
General 20	230	210	190	Any Monday, all year-round	20	A1	15
General Plus 25	410	365	345	Any Monday, all year-round	25	A1	15
Intensive 30 / Bildungsurlaub	600	530	510	Any Monday, all year-round	30	A1	15
Mini Group 5	120	105	100	Any Monday, all year-round	5	A1	2-3
Mini Group 10	240	210	200	Any Monday, all year-round	10	A1	2-3
Mini Group 20	400	385	380	Any Monday, all year-round	20	A1	2-3
Individual 5	200	175	170	Any Monday, all year-round	5	A1	1
Individual 10	400	350	340	Any Monday, all year-round	10	A1	1
Individual 20	720	680	640	Any Monday, all year-round	20	A1	1
Extensive 4	50	45	43	Any Monday, all year-round	4	A1	15
Extensive 5	60	58	55	Any Monday, all year-round	5	A1	15

PROFESSIONAL FOCUS

Per person per week	Short Stay		Long Stay	Course dates	Lessons per week	Min level	Max class size
	1-4 weeks	5+ weeks	12+ weeks				
Languages for Business	630	560	530	Any Monday, all year-round	30	B1	15
Languages for Tourism	630	560	530	Any Monday, all year-round	30	B1	15
Customized Course	630	560	530	Any Monday, all year-round	30	A1	15

EXAM PREPARATION

Per course	Price	
DELE Exam Preparation	600	
SIELE Exam	600	
Oxford Test of English	600	
Cambridge Exam Preparation	600	
DELE/SIELE 20	2 weeks 500	4 weeks 1000

LONG-TERM PROGRAMMES

	Price
6 Month Program (26 weeks)	4570
9 Month Program (39 weeks)	6435
Gap Year (52 weeks)	8060

ONLINE CLASSES

	Price
Individual 5	150
Individual 10	285
Individual 20	525

LEISURE SPANISH/ENGLISH PROGRAMMES

	1-4 weeks	5+ weeks	12+ weeks	Lessons per week	Min level	Max class size
General 20 & Surf	330	310	290	20+2 lessons per week of 60 min (5*2h)	A1	15
General 20 & Windsurf 6	340	320	300	20+6 group lessons of 60 min (3*2h)	A1	15
General 20 & Windsurf 10	380	360	340	20+10 group lessons of 60 min (5*2h)	A1	15
General 20 & Yoga	275	235	215	20+3 group classes per week to choose from 5 different types of yoga	A1	15
General 20 & Latin Dance	260	225	215	20+2 group lessons of 60 min. each activity of more than 30 people	A1	15
General 20 & Flamenco	270	230	210	20+2 group lessons of 60 min. each activity from 6 to 9 people	A1	15
	1 week	2 weeks			A1	15
General & Padi scuba diver	520			20+2 day. With this certificate you can dive up to 12m.	A1	15
General & Padi scuba diver		880		20+online theoretical part & 3 days of practices at sea. you can dive up to 12m.	A1	15
General & Padi scuba diver		820		20+online theoretical part & 5 days of practices at sea. you can dive up to 30m.	A1	15

EXTRA ACTIVITES (All includes the activities insurance)

Per activity	Price	Details	Duration of session
Surf course	100		4 hours
Surf private lesson (1)	60		
Surf private lesson pack (5)	250		
Surf semiprivate lesson 2 pax (1)	50		
Surf semiprivate lesson 2 pax (5)	190		
Windsurf Baptism	38		2 hours
Windsurf course (3*2h)	110		6 hours
Windsurf course (5*2h)	150		10 hours
Windsurf Clinic	45	One-to-one with video recording	2 hours
	150		6 hours
	190		10 hours
Wingfoil baptism	50		2 hours
Wingfoil course (3*2h)	150		6 hours
Wingfoil course (5*2h)	190		10 hours
Wingfoil Clinic	75	One-to-one with video recording	2 hours
	190		6 hours
	230		10 hours
Snorkeling (Las Canteras)	35		
Scuba diving baptism (máx 6m)	80		1 dive
Scuba diving baptism (máx 6m)	120		2 dives
Padi scuba diving (up to 12m)	290		2 days
Padi open water (up to 12m)	380	One online theoretical part+3 days of practise	
Padi open water (up to 12m)	420	One online theoretical part+3 days of practise+ photos and material	
Padi advanced open water (up to 30m)	360	One online theoretical part+5 days of practise+ photos and material	

	Price	Details	Duration of session
Paddle Baptism	35		2 hours
Paddle course (5*2h)	150		10 hours
Paraglading	70		1 hour
Paraglading course (introduction)	750		7 days
Paraglading course (progression)	300		4 days
Bridge jumping (30m)	90	2 jumps minimum	
Multiadventure	80	Hiking, zip line, caving, rappel and climbing	3 hours
Climbing Clinic	50	Half day, one to one	
	70	Full day, one to one	
Basic climbing Clinic	280		5 days
Progression climbing Clinic	190		3 days
Yoga Unlimited monthly pass	65		
Yoga 1 week, Unlimited pass	45		
Yoga 2 week, Unlimited pass	55		
Yoga 3 class pack	33	(to be used within a month period)	
Yoga 6 class pack	55	(to be used within a month period)	
Yoga single class	12		
Ferrata for beginners	84,50	(free pick up & drop-off. picture and/or videos)	3/4 hours
Canoying	84,50	(free pick up & drop-off. picture and/or videos)	4/5 hours
The Rainforest Tour	97,50	(free pick up & drop-off. Zero-Km, products tasting, picture, videos)	8 hours
The Red Canyon Tour	97,50	(free pick up & drop-off. Zero-Km, products tasting, picture, videos)	8 hours
The Volcano Heart Tour	97,50	(free pick up & drop-off. Zero-Km, products tasting, picture, videos)	8 hours

HOMESTAY ACCOMMODATION

						Supplements		
Per person per week	Room	Bathroom	Board	Price per week	Extra week	Special diets per week**	Extra night***	Private bathroom****
Homestay	Single	Shared	B&B	240	216	30	40	60
			Half board	300	270		50	
			Full board	360	300		60	
	Double/ Shared	Shared	B&B	180	150		30	
			Half board	240	210		40	
			Full board	300	240		50	

*If you are staying in a shared apartment, you will be required to pay a security deposit of 150 € at the time of arrival (via Visa or Mastercard). It will be refunded at the end of your stay, as long as there are no flaws or damages in the residence or apartment.

**Available in host families

*** A maximum of three extra days are available upon request for an additional charge and subject to availability. The cost of a full week will be charged if you stay four or more days (not applicable to private apartments).

**** Available in host families, student apartments and residences upon request for an additional fee and subject to availability. In double rooms, the private bathroom is shared with your roommate.

*****Price per week (6 nights): from Sunday to Saturday or Saturday to Friday.

HOTEL, GUEST HOUSE & APARTMENT ACCOMMODATION

Prices may vary depending on dates.

Per person per night	Price
Apartments	From 55
Hotels	From 80 (according to season and availability)

In addition, private apartments can be rented for those who want more privacy and a more relaxed atmosphere, recommended for those traveling with their partners or families. The exact price will be given upon specific availability. This type of accommodation is subject to special and/or additional conditions. Payment must be completed at the time of booking and, in case of cancellation, no refund or credit towards the purchase of other products will be applied.

TRANSFERS

Airport	One way	Return
Las Palmas de Gran Canaria Airport Around 25 minutes by road	50	85



GENERAL CONDITIONS

PAYMENT METHODS

Beneficiary: LC Idiomas GC SLU

Account number: 2100 7008 51 0200119537

IBAN: ES69 2100 7008 5102 0011 9537

1. COURSE PROVISION

1.1 LC Idiomas GC SLU, with registered office at Calle República Dominicana, 17, 35010, Las Palmas de Gran Canaria, offers language courses subject to these Conditions, the reservation and acceptance of which shall constitute the "Contract".

1.2 The academy may modify these Conditions at any time in relation to future courses, which will be published on this website.

1.3 If the Course booked by the student is no longer available, the Academy will inform the Student and will endeavour to offer an alternative Course which is reasonably acceptable to the Student, but if this option is not possible, the Academy is entitled to cancel the Contract.

1.4 In the exceptional case that only 2 students enrol on group course at the same level, the school reserves the right to convert the course into a semi-private programme, which will result in a 50% reduction in class hours. And in the exceptional case that only 1 student enrolls, the school reserves the right to convert the course into a private programme which will result in a 70% reduction of the class hours.

2. COURSE BOOKINGS AND CONDITIONS

2.1 Bookings for General Courses, Academic Year and Action English. The booking fee must be paid in full before the start of the course in order to guarantee a place on the requested course.

2.2 Bookings for individual and mini-group classes. The academy reception reserves the right to release the timetable for individual or mini-group sessions if no response is received from the student to renew the voucher within 24 hours of notice of the end of the voucher.

2.3 Reservation of places in conversation classes. The process to book your place in a conversation class, either in person or online, must be done through the following link: <https://lcampus.co/clases-de-conversacion-de-ingles/> at least 24 hours before the scheduled class.

2.4 Cambridge exam preparation courses. All students are required to take the mock exam in order to access the preparation courses. Access to the course will be subject to the result obtained and the recommendations made by the Academic Coordination team.

2.5. In the General Plus, Action English Plus, Conversation Plus and Intensive courses, it is compulsory to complete the individual sessions within the 4 weeks of the course. Once this period has elapsed, it will not be possible to make up the sessions not taken.

*Preservation of certificates. Cambridge certificates are kept on file for a maximum period of 1 year from the notification of arrival.

3. CANCELLATION, NON-PRESENTATION AND/OR ABANDONMENT OF THE PROGRAM BY THE CONSUMER

In the event that a consumer decides to cancel the contracted program, they must notify Language Campus in writing. The consumer will have the right to a refund of the amounts paid to Language Campus. However, the consumer must pay and, where appropriate, Language Campus may withhold the amount corresponding to the damages caused to Language Campus, including expenses of all kinds incurred by Language Campus to date, including but not limited to: payments to third parties involved in the program: schools, residences, insurance companies, telephone calls, as well as any other infrastructure and/or logistics expenses, among others. In order to inform the consumer of the approximate amount of the withholdings or charges that will be made and regardless of their subsequent determination, the withholdings or charges for withdrawal will amount to:

- Management expenses that are calculated at a minimum of €300 non-refundable.
- 50% of the total amount of the program, if the cancellation occurs between 20 and 45 days prior to the start date of the program.
- 75% of the total amount of the program, if the cancellation occurs between 10 and 20 days prior to the start date of the program.
- 85% of the total amount of the program, if the cancellation occurs between 3 and 10 days prior to the start date of the program.
- 100% if the cancellation occurs in the previous 48 hours, or in case of non-appearance by the consumer at the exit or once the program has started, abandons it of their own free will, of their parents or legal representatives, or be expelled from the program.

4. DECLARATION OF HEALTH STATUS

4.1 Students must state on the application form whether they suffer from any type of: i) physical or mental illness; ii) allergy; iii) disability; or iv) any other condition that:

- * may interfere with their ability to complete the course satisfactorily;
 - * may affect the health or well-being of any other student, teacher or member of staff;
 - * may require medical follow-up, treatment or emergency intervention of any kind during the training.
- Language Campus reserves the right to refuse to accept any student, or to terminate their training, if their continued participation in the training could pose a risk to their own

health and safety, or that of any member of staff. In such cases, Language Campus will decide on the refund policy to be applied, at its sole discretion.

5 PUBLIC HOLIDAYS

5.1 There will be no classes on public holidays and the academy facilities will remain closed. All scheduled group course start dates fall on a Monday, unless it is a public holiday, in which case they will start on the following day, Tuesday. No compensation will be made for classes not offered on public holidays.

6. SUBSTITUTION POLICY

6.1 In the event that, following the placement test, it is considered that a student has been placed in a level that is not appropriate for the type of programme or course chosen, the academy reserves the right to relocate the student to a class appropriate to their level, which may have a lower number of teaching hours and different content. We also reserve the right to cancel any programme or course at short notice due to lack of demand.

6.2 In the event that a teacher notifies a change of availability or termination of employment with the school, Language Campus reserves the right to assign a substitute teacher to the course.

7. PAYMENT

7.1 Individual, Mini-Group, Intensive, General Plus, Exam Preparation, Online and Blended Learning courses. Payment of the full course fee must be made to the centre no later than 4 weeks before the course start date (due date).

7.2 Any reservation is subject to acceptance by Language Campus.

7.3 The fee will be automatically renewed if one of the following cases is not requested 10 days before the end of the term:

*Change the account number

*Applying for cancellation of your course

7.4 Language Campus reserves the right to invoice the course fee at any time after acceptance of the booking.

7.5 All course fees must be paid in Euros.

7.6 The centre reserves the right to increase the course fee by such amount as is reasonable in the circumstances, informing the Student at any time prior to the course start date. Any increase in the Course Fee will be the result of any increase in costs to the Centre due to factors beyond its control, such as, but not limited to, increases in: tax increases, government measures and labour costs.

7.7 Any increase in the price of the course shall not affect the legal right of students to cancel the contract.

7.8 Enrolment: at the beginning of all courses offered in the Language Campus catalogue, students are required to pay an enrolment fee. This registration fee includes the administration costs. In the case of trimester courses, the registration fee is paid at the beginning of the course and must continue to be paid for each new trimester. In the case of the Academic Year and Action English or Action German, the registration fee must be paid at the beginning of each academic year.

7.9 Proof of payment. Language Campus may require the client to present documentary proof of payment of the course fee, both prior to the start of the course and at the start of the course. Failure to provide such proof may result in the denial of access to the course.

8. BOOKS AND LEARNING MATERIALS

8.1 During the course of their programme, learners will have the necessary resources (photocopied or books) and learning materials available to them at all times. Some specialised programmes may require the purchase of additional books or manuals.

8.2 The cost of books will be reflected in the academy catalogue according to the level and purpose of the course. In addition, those students in individual or mini-group classes who do not wish to purchase a book may request the delivery of photocopiable material for a fee of €15.

9 CANCELLATIONS

9.1 Individual and Mini Group classes. Individual classes, mini-group classes, Conversation Plus, General Plus and Intensive courses may be cancelled and rescheduled as long as there is a formal notification at least 24 hours prior to the scheduled class. This notification must be made by writing (E-mail or WhatsApp) directly to the school's reception. Classes cancelled outside this period will be discounted and cannot be made up, rescheduled or reassigned.

9.2 All bank charges incurred by the centre in relation to the refund of any course fees or deposits will be reimbursed by the Student without delay.

10. REFUNDS

10.1 Refunds for Action English and Academic Year courses: Students who have decided to pay their course fees by direct debit will receive a receipt from their bank on the 1st of each month. If the receipt is returned, a penalty of 5€ + the monthly payment returned will be charged.

10.2 In the case of individual/mini group lessons there is no refund.

10.3 For group courses there is no refund of the amount paid.

11.CHANGE OF COURSE

11.1 Language Campus reserves the right to change or cancel a course, venue or facilities without notice in the event of unforeseen circumstances beyond its control; or where the level of bookings received does not reach the minimum number necessary to operate a course viably.

11.2 In the event of a change of course by Language Campus, the centre will offer an alternative course, venue or facilities or a refund (of fees paid) and you agree that you shall have no further claim against Language Campus in respect of any change of the course.

12. LIABILITY

12.1 Language Campus shall not assume any liability to the Student for any loss, damages, costs, expenses or other claims for compensation arising in connection with the Student's participation in the Courses provided by Language Campus, except in relation to death or personal injury caused by the negligence of the centre or its employees.

12.2 Language Campus shall not assume any liability to the Student for any loss, damage, costs, expenses or other claims for compensation arising in connection with the cancellation or delay of classes or as a result of any event or action beyond the control of the centre, including, but not limited to, traffic jams, adverse weather, public transport and illness.

13. STUDENTS

13.1 Illness of students. In the event of illness or injury, Language Campus will follow the directions of the attending medical personnel, unless otherwise instructed by parents/guardians. In the event of a medical emergency, all students will be taken to the nearest hospital or outpatient clinic.

13.2 Language Campus reserves the right to take such fair and reasonable action as it deems appropriate in the event of a situation not covered by these Conditions.

13.3 Absenteeism. Any participant who fails to attend each and every class that makes up the programme shall not be entitled to any refund for classes missed. Likewise, participants will lose the right to receive their course completion certificate unless they have attended 80% of the classes.

14. EXCLUSION AND EXPULSION

14.1 A Pupil shall be excluded from participation in courses provided by Language Campus if, in the reasonable opinion of the Centre, the Pupil has behaved in a manner amounting to gross misconduct.

The student will be expelled from the course with immediate effect and must return home, at the expense of his/her parents in the case of minors, as soon as possible. No refunds will be offered for the remaining days that the student is expelled from the training.

Grounds for expulsion may include, but are not limited to, the following:- Purchase or use of illegal drugs;- Purchase or use of alcohol;- Involvement in violent or abusive behaviour;- Possession of weapons;- Any other serious offence.

14.2 Student Code of Conduct:

During their stay at Language Campus, students agree to abide by the policies and rules of the student code of conduct. As part of Language Campus' commitment to our students, we strive to provide them with the best possible learning environment, and as such, we expect them to behave in an exemplary and respectful manner towards others. Behaviour that is considered inappropriate includes the following:

- * Disruption of the learning environment (foul language, bullying, or use of mobile phones in class, among others);
- * Deliberate destruction, misuse or theft of any property belonging to Language Campus or other students;
- * Violence or threats against other students, Language Campus staff or their property;
- * Inappropriate use of the Internet;
- * Failure to comply with local criminal copyright laws that prohibit the appropriation, copying or modification of any copyrighted material; or
- * Failure to disclose any pre-existing medical or mental health condition.

15.COMPLAINTS

We work hard to ensure that you receive a service that meets the student's expectations. However, it is possible that, on occasion, a student may not be completely satisfied with the service provided. All Language Campus staff are ready to help there are any queries or problems. If a student not satisfied with the services provided, please follow the steps below in order to find the best solution to your problem.

*Training: If you have any problems or queries regarding the lessons or your learning, please discuss them with your teacher in the first instance. If, after discussion with the teacher, you have not found a satisfactory solution or answer to your problem, please speak directly to reception.

*Administration: If you are unhappy with any matter relating to the administration of your course, such as payment management or course dates, please contact reception directly.

16. PROTECTION OF PERSONAL DATA

Your privacy is important to us. It is important that you carefully read our privacy policy, in which we inform you about how we process your personal data, which is available at the following link <https://lcampus.co/politica-de-privacidad-espanol/>

17. JURISDICTION

For any dispute that may arise between the parties due to the interpretation, compliance and execution of this contract, they submit to the jurisdiction of the Courts and Tribunals of Gran Canaria. All suggestions or claims made will be addressed by written communication to: LC Idiomas GC SLU. C/ República Dominicana, 17, Las Palmas de G.C.



EXPERTS IN LANGUAGES

CALL US TODAY AND
START YOUR JOURNEY

(+34) 654 63 67 26
(+34) 618 08 65 06
info@lcampus.co

3 LOCATIONS IN GRAN CANARIA

◆ MESA Y LÓPEZ

Calle República Dominicana, 17
(frente al Mercadona)

◆ VELARDE


Calle Velarde, 16

◆ 7 PALMAS

Avenida Pintor Felo Monzón, 27
esq. Calle Lomo San Lázaro

FOLLOW US ON SOCIAL MEDIA

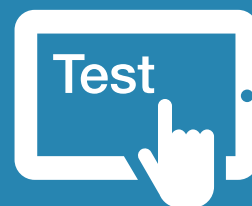
 @LanguageCampus

 @languagecampus

 @LanguageCampusGC

Start now!

test.idiomasgc.com



Free online
English & Spanish level test

OUR PARTNERS

