

PRE-ARRIVAL GUIDE

SUMMER CAMP

Welcome to **Language Campus Summer Camp!**
We look forward to meeting you in person this summer for this amazing adventure on our breathtaking islands! Please read the following pre-arrival guide with your parents for more information and to pack everything you need for your camp.

◆ GRAN CANARIA:

SCHOOL ADDRESS

Calle República Dominicana 17
35010 Las Palmas de Gran Canaria (Las Palmas)
Spain

CAMP DIRECTOR:

Florinda Figuccia: +34 654 63 67 26

EMAIL

florinda@lcampus.co

◆ TENERIFE:

SCHOOL ADDRESS

Plaza del Pescador, 1, 38650 Arona, Santa Cruz de Tenerife

CAMP DIRECTOR:

Meryem Mimouni +34 618 08 65 06

EMAIL

meryem@lcampus.co

ACCREDITATIONS & PARTNERSHIPS





AIRPORT CHECKLIST

Documents you need at hand at the airport:

- ◆ **YOUR ID CARD OR PASSPORT**
Please make sure that your documents are valid.
- ◆ **YOUR RETURN TICKET**
Our airport is **Gran Canaria Airport (the airport code is LPA or GCLP)** and **Tenerife South Airport (the airport code is TFS)**.
- ◆ **THE OFFICIAL TRAVEL AUTHORISATION SIGNED BY YOUR PARENTS OR LEGAL GUARDIAN(S)**
In addition to your valid ID card or passport, you may need an official document signed by your parent(s) or legal guardian(s) authorising you to travel on your own.
- ◆ **YOUR VISA (IF NEEDED)**
Please visit the following webpage to find all the information you need about entry requirements: [Check official website here](#)

You can also contact your respective consulate or embassy in Spain.
- ◆ **OUR IMPORTANT CONTACT NUMBERS**
+34 654 63 67 26
- ◆ **YOUR POCKET MONEY IN EUR**
We recommend that students bring around **100€ per week**.
- ◆ **YOUR FLIGHT DETAILS:**
Have you sent us your flight details?
If you haven't done so yet, please email them to info@lcampus.co as soon as possible so we can arrange your airport transfer.





BEFORE YOUR **ARRIVAL** TAKE YOUR **LEVEL TEST** HERE

LCAMPUS.CO/TEST



- ✓ Choose the **language** of your **test**
- ✓ Indicate the **best answer** to each **question**
- ✓ Try to answer as many questions **as you can**.
Don't worry if you **can't answer them all**
- ✓ Time: **50 minutes** approximately

DON'T FORGET TO BRING!

GENERAL

- ☐ Your plane tickets
- ☐ Your passport or EEA ID card
- ☐ Your visa (if needed)
- ☐ Your pocket money
- ☐ Paper and pens

CLOTHING

(ENOUGH FOR THE LENGTH OF YOUR STAY)

- ☐ Summer clothes (casual but decent)
- ☐ A few jumpers
- ☐ Sports clothes
- ☐ Trainers
- ☐ Comfortable shoes
- ☐ Underwear
- ☐ Pyjamas
- ☐ Swimming costumes
- ☐ A sun hat
- ☐ A swimming hat
- ☐ Swimming goggles
- ☐ A raincoat
- ☐ A smart outfit for the final gala

OTHER

- ☐ Toiletries (to pack in your checked luggage!)
- ☐ Sunscreen lotion (SPF 35 minimum is compulsory but SPF 50+ is advised)
- ☐ Mosquito repellent
- ☐ Beach & bath towels
- ☐ Prescription medication you require
- ☐ Travel adapter for electrical appliances if needed



If you travel with a group leader, follow their instructions carefully.

If your flight is delayed or you are experiencing any other issue, don't panic! Just contact Language Campus emergency number (which you should keep with you at all times): +34 654 63 67 26

Our airport transfer will take you straight to the hotel where a member of staff will give you the key to your room.





RESIDENTIAL ARRIVALS

HOTEL ROOMS

We provide shared rooms in our hotel (up to 4 students per room). Each room has Wi-Fi and an en-suite bathroom with a toilet. Keep in mind that room changes and requests made on arrival will be considered but not always possible and changes can only take place after all students have arrived on that day.

KEY DEPOSITS

On arrival at the camp, our staff will take a deposit of 20 EUR when they give students their keys.

The deposit will be returned at check-out at the end of the stay, when the keys are returned.

MEALS

All meals (breakfast, lunch, dinner) are provided by Language Campus and taken at the hotel. We also provide packed lunches on excursion days. Please note that the food and mealtimes might not be the same as students are used to at home, and we expect students to adapt and try new things.

If you have any special dietary requirements, please inform us in the Registration Form.

LAUNDRY

Laundry service is not provided; however, your group leader will let you know where to find nearby coin-operated laundry facilities close to your hotel accommodation.

MEDICAL CARE

Please provide us with any relevant information about a student's physical or mental health issues. If a student brings medication with them, please inform us of this in advance in the Registration Form.

Our staff may give students non-prescription medication (such as paracetamol), unless we are informed in advance not to do so.

INSURANCE

It is mandatory to bring your European Health Card if you are EU citizen. For non european students, Language Campus provides an international student health insurance with Guard.me. You can find information about our insurance on the following website: <https://www.guard.me> For Spanish students, please bring your Spanish Sanitary Card.



MONEY AND VALUABLES

We strongly recommend that students do not bring valuable belongings unless absolutely necessary.

On excursion days, our staff will tell students and their group leaders in the morning that they might need money for souvenirs and others. On any other day, students will not have any expenses and we recommend that they leave their wallet in the hotel rooms, which will be locked at all times.

As we mentioned above, we will not take any responsibility for lost or stolen items.

PHOTOS

Language Campus Gran Canaria takes photos of students for marketing purposes. If you do not want your picture taken, please inform us in the Registration Form.

COMPLAINTS

We try our best to ensure that students are fully satisfied with their time on our summer camp. However, problems can sometimes arise.

If you wish to make a complaint about an aspect of a student's stay, please write to our head office: info@lcampus.co

ACCOMMODATION DETAILS

GRAN CANARIA:

ADRESS CONCORDE HOTEL: C. Tomás Miller, 85, 35007 Las Palmas de Gran Canaria, Las Palmas

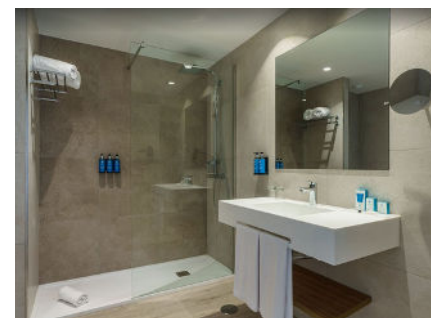
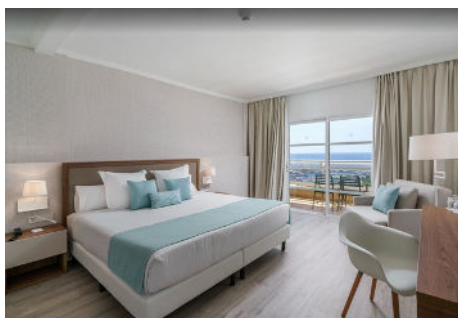
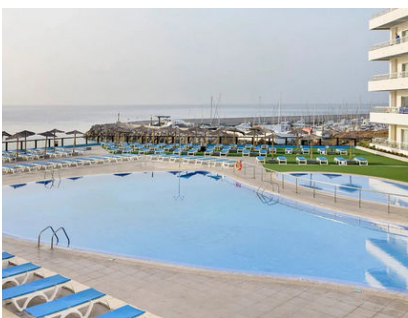


ADRESS BEX HOTEL: C. León y Castillo, 330, 35007 Las Palmas de Gran Canaria, Las Palmas



TENERIFE:

ADRESS ALUA HOTEL: Av. del Atlántico, 11, 38639 Golf del Sur, Santa Cruz de Tenerife





CAMP

GUIDELINES

- ◆ Speak **English** and/or **Spanish** only
- ◆ **We don't tolerate any form of bullying or intolerance** (verbal, physical or via social media)
- ◆ **Don't fight, steal or damage!**
- ◆ **Smoking is not permitted** in any of our facilities
- ◆ We **do not** take any responsibility for lost or stolen items, so **do not leave your belongings unattended**
- ◆ **You must attend all our lessons and activities**
- ◆ You must be **punctual**
- ◆ Food is not permitted during the lessons, and your mobile phone should be turned off
- ◆ Consuming **alcohol or illegal drugs is strictly prohibited**
- ◆ **Keep our emergency number with you at all times**
- ◆ **Be sensitive to the local culture**

● **ALL CAMP RULES ATTACHED:**

Make sure you and your parents take a moment to read, accept, and sign all the camp rules we've attached.

NOTE TO THE PARENTS

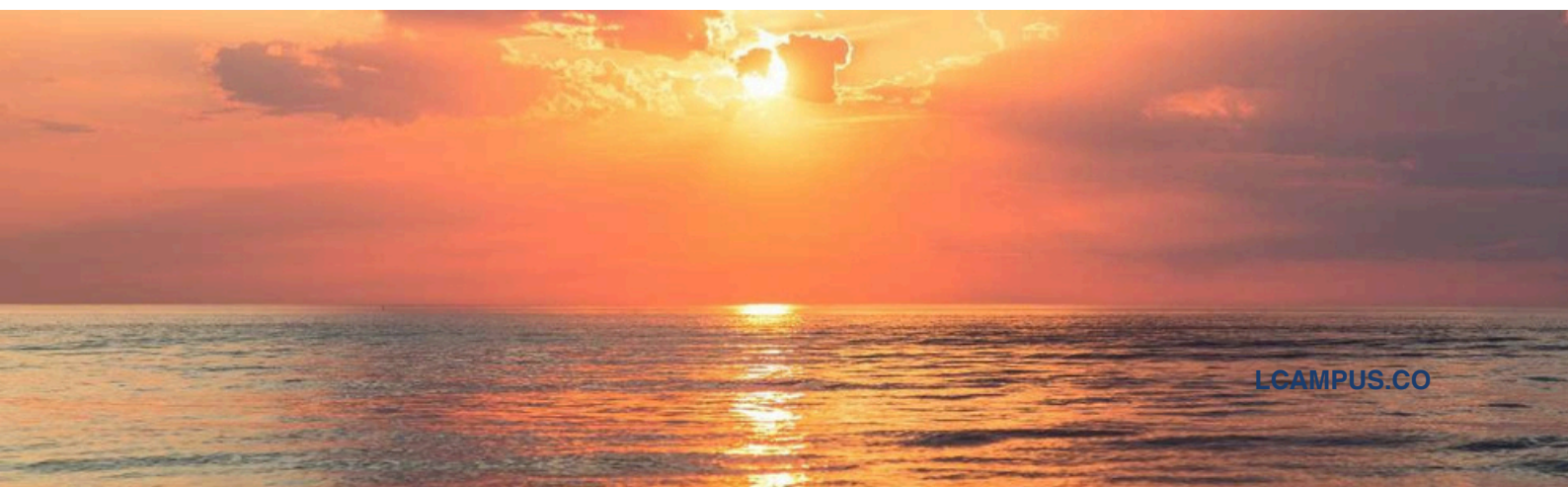
Our camp rules ensure the safety and wellbeing of everyone attending the camp, which is why we take these rules very seriously.

Students who break Spanish law or repeatedly misbehave will be required to leave the camp at your expense and you will not be given any refund for the remainder of the course. We thank you for your understanding.

LAST BUT NOT LEAST...

Don't be shy or afraid to speak the language you are here to learn: the best way to learn is to practise, and your teachers, supervisors and new friends will always be right next to you if you need any help. You'll see how quickly our bilingual environment allows you to improve your conversation range and verbal expressions.

You're about to start an unforgettable adventure in a new city, with a new language, experiencing a different culture and making connections that can last for years. Pack your bags, double-check your travelling documents and **get ready for a summer you'll never forget!**





EXPERTS IN LANGUAGES

Please contact our head office if you have any question regarding our summer camp or the booking process.

You can also contact us at any time if you need anything once the camp has started.

FOLLOW US ON SOCIAL MEDIA



@LanguageCampusgc



@languagecampus



@LanguageCampusGC

HEAD OFFICE CONTACT DETAILS

+34 654 63 67 26 / +34 618 08 65 06

info@lcampus.co

Calle República Dominicana, 17 35010
Las Palmas de Gran Canaria (Las Palmas)

WITH

guard.me
International Insurance

OUR PARTNERS

